

GUARDIAN ANGEL CONTENTS AND INSTALLATION INSTRUCTIONS

- 5 X SETS OF SHIM INSERTS
- 2 X SET OF CLAMPS
- 4 X CABLE TIES
- 4 X SHEAR BOLTS
- 1 X TAMPER PROOF KEY
- 4 X TAMPER PROOF BOLTS
- 1 X LENGTH OF STAINLESS STEEL CABLE



(Please note when using shear bolts, hacksaw round before final tighten to ensure shear off)

STEP 1

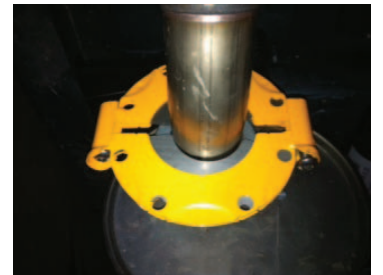
If you know the diameter of your exhaust pipe then simply select the corresponding insert. For example: a 2" diameter pipe will require a 2" insert and so on.

If you are unsure of the exhaust pipe diameter then simply offer up the various inserts directly on to the exhaust pipe in order to select the appropriate one for fitting. The easiest way to establish the correct selection is to make sure that the gap between the exhaust pipe and the insert is as minimal as possible.



STEP 2

With the inserts placed inside both halves of the clamps, place the upper half of the clamp on to the top of the exhaust pipe. In addition to the tamper proof bolts supplied with Guardian Angel there are also a set of shear bolts included for permanent installation if required. Select the preferred set of bolts and insert them upwards through the lower half of the clamp. Place the lower clamp against the underside of the exhaust pipe in line with the upper half of the clamp and begin to tighten the bolts by hand until there is an



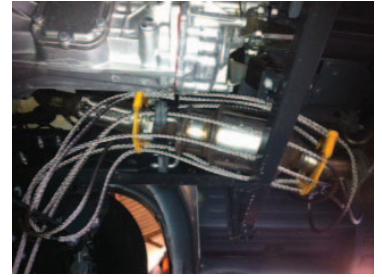
approximate gap of 12-15mm between the 2 clamps. The bolts will be tightened properly later on in the fitting process. Do the same for the second set of clamps at the other end of the catalytic converter.

STEP 3

Prior to installing the cable, lay it out flat on the ground. Locate the centre point and mark with electrical tape. Take one end of the cable and pass it through the top holes on both clamps (Left to right) then continue on to pass the cable over/around the vehicle chassis and pull through until the centre point of the cable reaches the chassis anchor point. Then pass the cable end back through the remaining 2 top holes (right to left) There should now be equal lengths of cable protruding from each of the top clamps at either side of the catalytic converter. The previous process should then be repeated with these 2 lengths ie: pass the cable over the chassis and then back through both clamps. This process should be repeated until all of the holes around the edge of the clamp have a cable passing through, thus creating the cage effect around the catalytic converter.

STEP 4

When all of the holes have been threaded with the wire rope and passed over the chassis, ensure that the clamps are positioned as closely as possible next to the catalytic converter. At this point the clamps have not been fully tightened, so manipulation of the clamps to the optimum position must be carried out at this point prior to tightening the bolts. When you are happy with the positioning of the clamps the bolts can then be tightened in stages one at a time until the clamps are almost pulled together but with enough play to allow the cables to be pulled through the holes to eliminate any slack before the bolts are tightened fully. If you are using the shear bolts make sure you cut at least half way through the stem before you carry out the final tightening. Failure to do so may damage the thread on the clamp. Any excess cable should be wound up and secured as high up inside the vehicle chassis as possible also ensuring that they do not interfere with parts such as brake cables, electrics or moving parts of the vehicle. Also ensure that no cables are allowed to hang down and be visible below the lowest part of the vehicle. The cable ties included can be used to further secure the cables if required.



CONGRATULATIONS! Your vehicle is now protected by “GUARDIAN ANGEL”

IMPORTANT PRODUCT AND SAFETY INFORMATION

PLEASE NOTE:

Guardian Angel is a universal product, however due to the variants in vehicle design, size/lengths of catalytic converter and accessibility of the durable sections (attachment points) of the chassis, there are numerous configurations by which the Guardian Angel can be attached to the vehicle chassis. Depending upon the vehicle, there should be a minimum of 3 chassis attachment points, however there can be up to 7 points on some vehicles.

SAFETY WARNING:

To avoid the risk of injury from your catalytic converter, which will become extremely hot during use, we strongly recommend that you wait at least 2-3 hours after the vehicle has been switched off before attempting to install your Guardian Angel. No responsibility will be accepted by Nationwide Chemical Assistance Ltd (Trading as Guardian Angel) or the manufacturer (Secura-Lok) for injuries caused to persons failing to follow this advice.

As with any product containing small parts, please ensure that ALL parts of the Guardian Angel kit are kept out of reach of children to avoid the risk of injury or choking.

Protective goggles should be worn at all times when installing or adjusting the Guardian Angel.

DISCLAIMER:

Guardian Angel is installed as an aftermarket product at the customer's own risk. Nationwide Chemical Assistance Ltd (Trading as Guardian Angel) or the manufacturer (Secura-Lok) will not accept liability or responsibility for injury or damage caused to the installer or vehicle during the fitting of Guardian Angel